



Myoporum parvifolium 'Purpurea'
Purple Creeping Boobialla. Groundcover



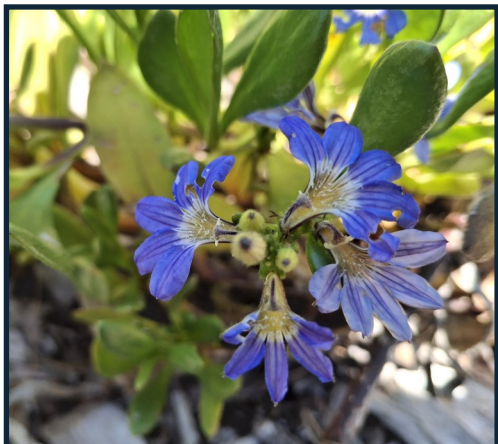
Eremophila sp.
Emu Bush. Small shrub



Eryngium ovinum
Blue Devil. Perennial herb



Ixodia achillaeoides
Hills-Daisy. Small shrub



Scaevola calendulacea
Dune Fanflower. Groundcover



Goodenia varia
Sticky Goodenia. Groundcover

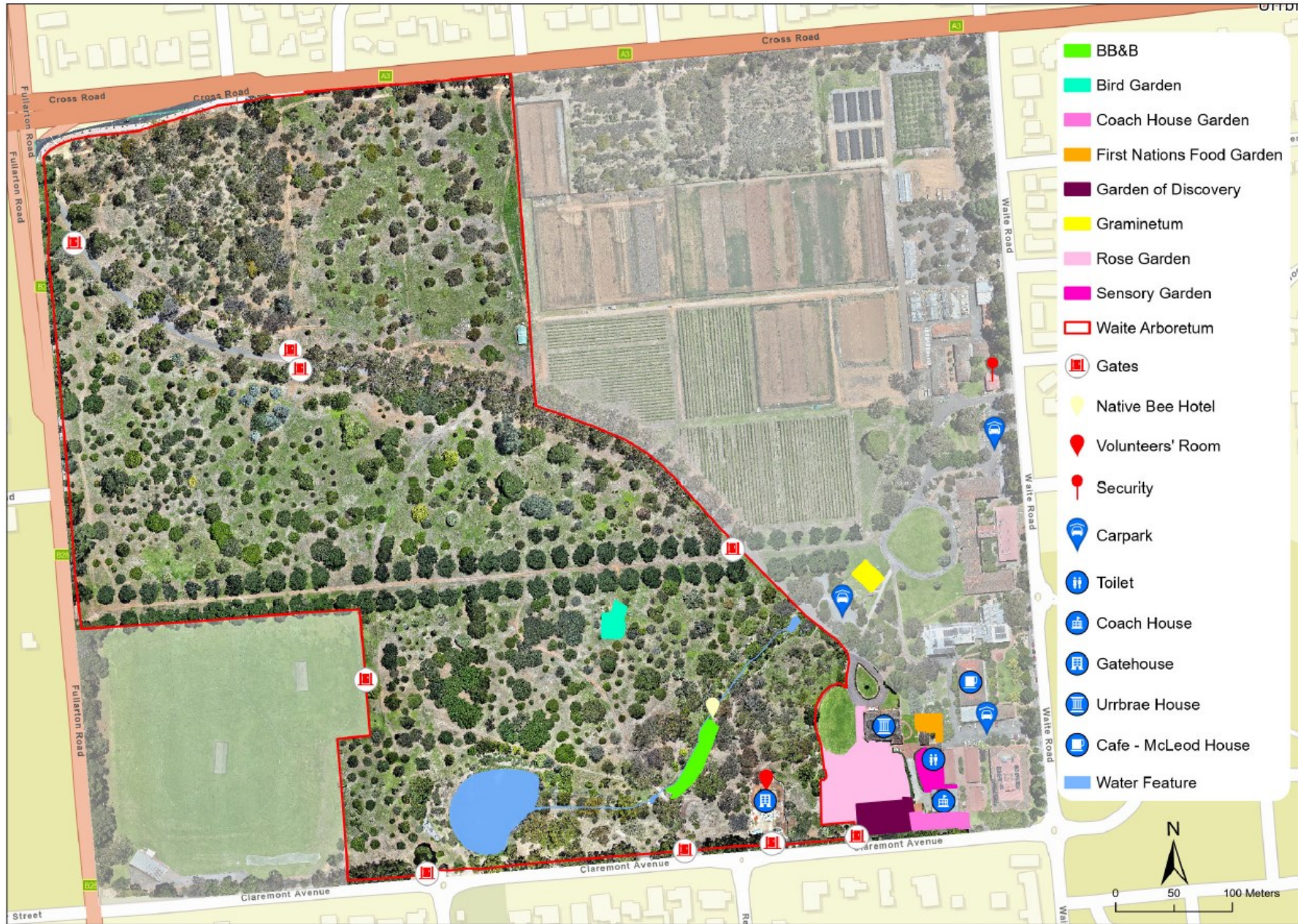


Cheiranthra alternifolia
Clustered Finger-Flower. Shrub



Pycnosorus globosus
Billy Buttons. Perennial herb





Biodiversity Gardens

Earth's ecosystems continue to suffer from significant biodiversity loss, and no-where more so than in our cities and suburbs. We can support our native fauna (birds, invertebrates, reptiles and mammals) by creating places that support them through habitat and food sources. **The Bird Garden is part of a series of "Biodiversity Gardens" we developed in specific areas of the Arboretum to support native fauna, by planting native tree, shrub and grass species that provide food or shelter.** These gardens provide opportunities for the Arboretum visitor to visualise how these plants look, feel and smell and to be inspired and grow them in their private gardens.