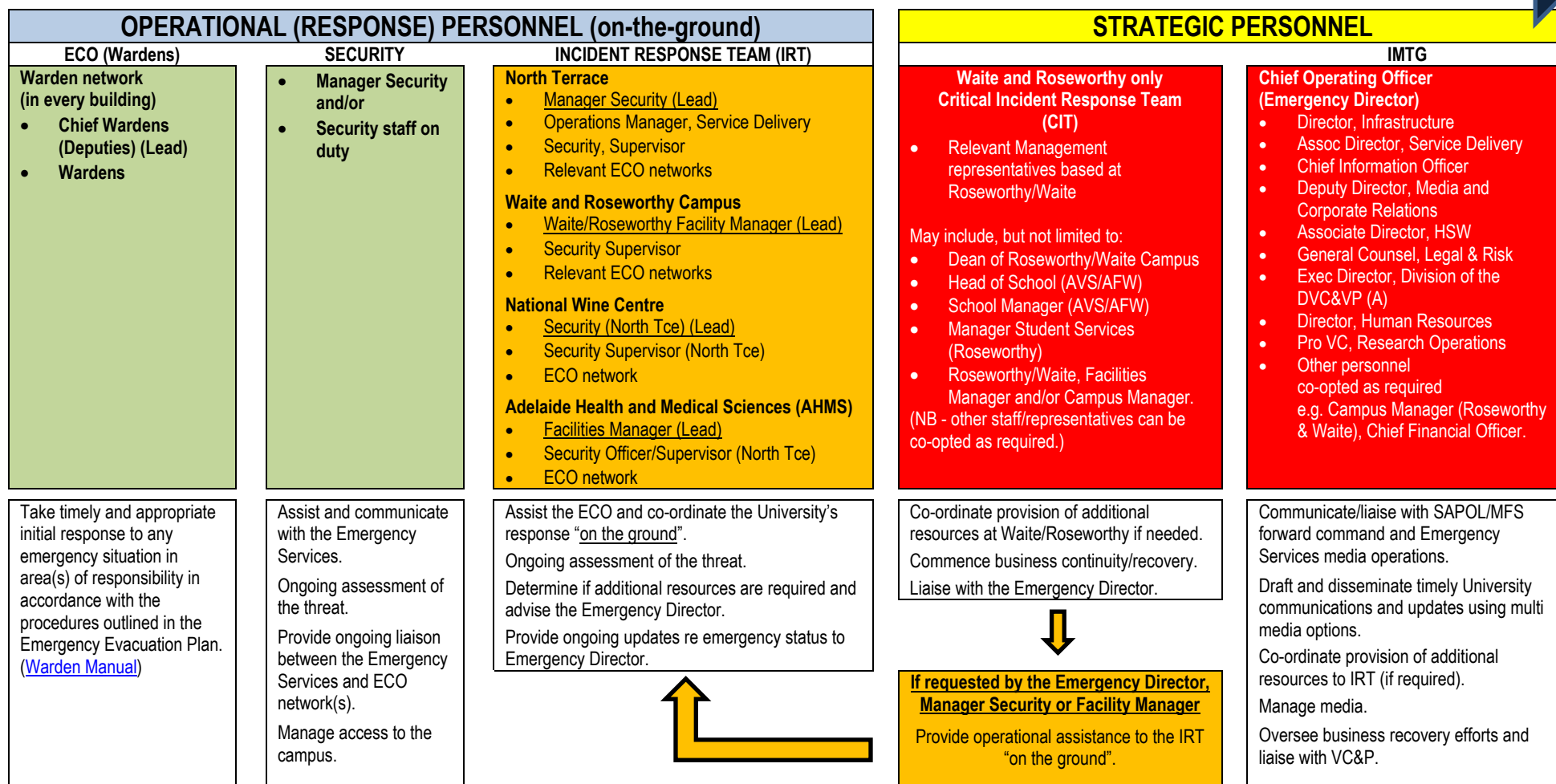


SUMMARY OF EMERGENCY MANAGEMENT ROLES

As an incident escalates from a minor to critical – Additional resources are deployed to assist manage the response and coordinate business continuity/recovery



| | | | | |
|---------------|--|-----------------|------------------|-------------|
| HSW Handbook | Emergency Management | Effective Date: | 30 October 2018 | Version 3.2 |
| Authorised by | Chief Operating Officer (Division of University Operations) | Review Date: | 15 November 2020 | Page 1 of 1 |
| Warning | This process is uncontrolled when printed. The current version of this document is available on the HSW Website. | | | |