

STUDENT STATISTICS

	PERSONS		EFTSL	
	2008*	2007	2008*	2007
TOTAL STUDENT ENROLMENTS	21,311	20,472	16,839	16,012
Commencing Student Enrolments	7,785	7,539	5,831	5,732
Aboriginal & TS Islander Students	167	134	122	104
International Students - onshore	5,191	4,738	4,385	3,989
International Students - offshore	666	731	297	369

BY LEVEL OF PROGRAM	2008*	2007	2008*	2007
Postgraduate Research	1,814	1,851	1,269	1,294
Postgraduate Coursework	4,218	3,913	2,379	2,226
Bachelor Degrees	14,342	13,816	12,691	12,013
Other	937	892	499	480

BY FACULTY	2008*	2007	2008*	2007
Engineering, Computer & Maths Sciences	3,922	3,744	3,162	2,975
Health Sciences	3,326	2,999	2,646	2,386
Humanities and Social Sciences	3,791	3,772	2,902	2,847
Sciences	2,841	2,948	2,271	2,346
Professions	6,927	6,579	5,552	5,172
Central Areas	504	430	305	286

BY CAMPUS	2008*	2007	2008*	2007
North Terrace (includes hospitals)	19,412	18,490	15,706	14,758
Roseworthy	192	216	167	178
Thebarton	51	54	10	13
Waite	288	335	244	294
Other Australian	725	653	427	401
Offshore	643	724	285	367

BY GENDER	2008*	2007	2008*	2007
Female	10,361	9,884	8,186	7,741
Male	10,950	10,588	8,653	8,271

BY ATTENDANCE TYPE	2008*	2007	2008*	2007
Full Time	17,268	15,295	14,969	14,123
Part Time	4,043	5,177	1,869	1,889

* Preliminary Figures based on 2008 Student Submissions
Source: DEEWR 2007-2008 Student Data Collection

TIME SERIES

	2008*	2007	2006	2005	2004
TOTAL STUDENT ENROLMENTS	21311	20472	19652	19224	18690
Commencing Student Enrolments	7,785	7,539	7126	6852	6946

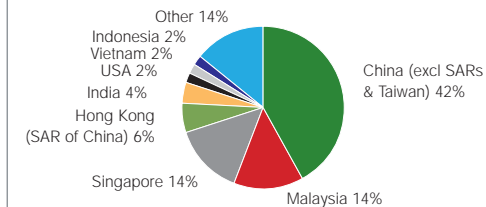
	2008*	2007	2006	2005	2004
TOTAL STUDENT LOAD (EFTSL)	16839	16012	15279	14955	14465
Commencing Student Load (EFTSL)	5831	5732	5282	5041	5061

INTERNATIONAL STUDENT ENROLMENTS	2008*	2007	2006	2005	2004
At Australian Campuses (onshore)	5191	4738	4196	3638	3033
At Campuses outside Australia (offshore)	666	731	730	786	751

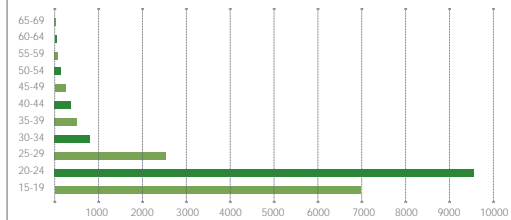
TOTAL STUDENT COMPLETIONS	2008*	2007	2006	2005	2004
	N/A	5150	5298	4575	4519

INTERNATIONAL ENROLMENTS

By country 2008 (includes onshore and offshore)



PROGRAM ENROLMENTS BY AGE GROUP 2008



STAFF STATISTICS

	PERSONS		FTE	
	2008*	2007	2008*	2007
TOTAL STAFF	2886	2803	2614	2548

BY TYPE	2008*	2007	2008*	2007
Academic	1293	1255	1163	1136
General	1593	1548	1451	1412
Casual	n/a	n/a	n/a	n/a

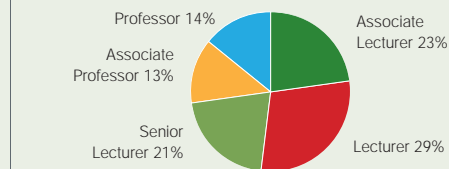
ACADEMIC STAFF BY FACULTY	2008*	2007	2008*	2007
Engineering, Computer & Maths Sciences	197	187	190	181
Health Sciences	359	327	300	271
Humanities and Social Sciences	176	190	156	164
Sciences	378	380	355	363
Professions	155	143	136	130
Central Areas	28	28	27	27

ACADEMIC STAFF BY FUNCTION	2008*	2007	2008*	2007
Teaching & Research	857	828	763	737
Research Only	424	416	389	388
Teaching Only	2	2	2	2
Other	10	9	10	9

ACADEMIC STAFF BY GENDER	2008*	2007	2008*	2007
Female	467	438	406	380
Male	826	817	757	756

* Note: Fulltime and Fractional Fulltime Staff Statistics. Casual staff figures for calendar year. Source: DEEWR 2007 & 2008 Staff Data Collection

ACADEMIC STAFF LEVEL (PERSONS)



RESEARCH ACTIVITY

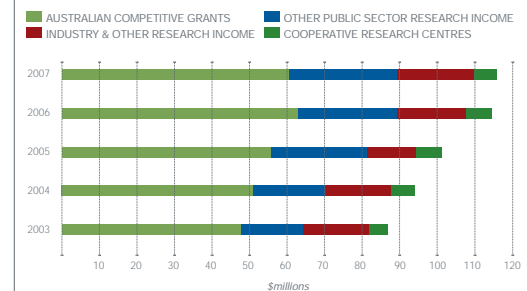
	2007	2006	2005	2004
RESEARCH INCOME*	\$'000	\$'000	\$'000	\$'000
Australian Competitive Grants	60,699	62,038	56,264	50,920
Other Public Sector Research Income	28,649	27,462	25,887	19,781
Industry and Other Research Income	20,413	18,169	13,016	17,090
Cooperative Research Centres	6,011	6,813	6,684	6,193
TOTAL UNIVERSITY RESEARCH INCOME	115,771	114,482	101,851	93,984

Source: DEEWR 2003-2007 Higher Education Research Data Collection

	2009	2008	2007	2006
RESEARCH BLOCK FUNDING*	\$'000	\$'000	\$'000	\$'000
Institutional Grant Scheme	15,744	16,232	16,500	16,371
Research Infrastructure Block Grant	12,961	13,641	13,820	14,248
Research Training Scheme	27,809	28,127	28,989	29,757

Source: DEEWR Research Block Grants funding announcements (www.dest.gov.au)

RESEARCH INCOME 2003-2007



REVENUE & EXPENDITURE 2008

	\$'000	\$'000
SUMMARY INCOME STATEMENT	CONSOLIDATED	UNIVERSITY
OPERATING REVENUE		
Received under HE Support Act	252,837	252,837
Learning and Teaching	132,470	132,470
Research Grants and Fees	129,212	122,544
Research - Other	20,222	20,222
Other	102,778	65,159
Total operating revenue	637,519	593,232
OPERATING EXPENDITURE		
Salaries, superannuation & related expenses	319,909	308,094
Non salary expenses	285,365	250,346
Total operating expenses	605,274	558,440
OPERATING RESULT	32,245	34,792
Operating Margin	5.1%	5.9%
SUMMARY BALANCE SHEET	CONSOLIDATED	UNIVERSITY
Total Assets	1,071,168	1,060,065
Total Liabilities	196,132	192,885
NET ASSETS	875,036	867,180
Current Ratio	1.4	1.2
CASH AT END OF REPORTING PERIOD	68,453	63,456

Source: University of Adelaide Annual Report 2008

CONTACT DETAILS

For further information refer to our website:
www.adelaide.edu.au/sp
 or contact **Strategy and Planning**
Tel: 08 8303 6478 **Email:** stratplan@adelaide.edu.au

QUICK FACTS



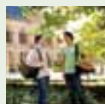
The University of Adelaide (founded 1874) is the third-oldest University in Australia, and is older than all but a handful of universities in England.



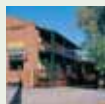
It was the first Australian university (in 1881) to open its doors to women on equal terms, ahead of Oxford (1920) and Cambridge (1948), and throughout its history has been a pioneer in many fields.



The University has produced 102 Rhodes Scholars (at December 2008) and five Nobel Laureates are among the many alumni who have made an outstanding impact on their communities world-wide.



Adelaide is one of Australia's top research universities and has four onshore campuses.



North Terrace, in the cultural heart of the city of Adelaide, is the main campus and site of most teaching and research facilities.



Thebarton campus in the inner western suburbs is one of the premier University-owned technology/research parks in Australia.



Waite campus in suburban Urrbrae encompasses the largest agricultural research complex in the Southern hemisphere, with many co-located government and industry partners. **Roseworthy** campus, 50km north of Adelaide, is an internationally renowned centre for excellence in dryland agriculture and animal production, hosts several collaborative centres, and is the site of the University's new veterinary school.



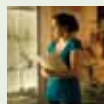
The University also offers a growing range of programs in Singapore through the Ngee Ann-Adelaide Education Centre, a partnership with the Ngee Ann Kongsi.



There are five faculties: Engineering, Computer and Mathematical Sciences; Health Sciences; Humanities and Social Sciences; Professions; and Sciences.



Adelaide offers courses at both undergraduate and postgraduate degree and diploma level across a wide range of disciplines in the sciences, health sciences, engineering, computer and mathematical science, humanities and social sciences, commerce, finance and management, architecture, landscape architecture and urban design, education and law.



The University is one of the major employers in the State of South Australia, employing 2886 staff in 2008.



Goals: A commitment to being recognised as a *great research university*; to have *research and innovation* permeate all of our activities; to continually improve the *educational experience* we offer our students; and to see and present ourselves as being *integral to the community and economy*.



2008 Pocket Statistics

