

URRBRAE HOUSE HISTORIC PRECINCT
SCHOOLS' PROGRAM –JUNIOR - YEARS 1 - 2
INFORMATION FOR TEACHERS 2025

YOUR VISIT TO URRBRAE HOUSE

A. BEFORE YOUR VISIT

1. Year level of students

Our **Junior Schools' Program** is aimed at **primary students in Years 1-2**. It is designed to meet Australian Curriculum requirements in Humanities and Social Sciences - HASS (Version 8.4) - at

- Year 1 *How my world is different from the past and can change in the future* focusing on family life in previous generations.
- Year 2 *Our past and present connections to people and places* focusing on how people are connected to their place and other places, past or present, and how technology has affected daily life.

Key concepts addressed in the Junior program include continuity and change, cause and effect, perspectives, empathy and significance.

2. Numbers of students participating in the program in one session

The program is designed for one class with a maximum of 30 students at a time. If your class is larger than 30 students, please contact the Urrbrae House Co-ordinator to discuss if we might be able to accommodate your class.



3. Cost (as of 1 January 2025)

\$228.80 (includes GST) per class or

\$150.15 (includes GST) per equity class (Public Schools' Index of Educational Disadvantage Category 1-4 school)

4. Special needs and allergies

Urrbrae House is a two-storey heritage-listed building and the lower level of the house is accessible by stairs only. Please advise the Urrbrae House Co-ordinator if a student in your class cannot manage stairs.

We ask you to advise us **in advance** of any issues or conditions that might affect a student's participation in the program. We are happy to discuss how we may work with you to facilitate the participation of students who have special needs. Where a student has significant special needs, please assist them by providing appropriate carer/s when at Urrbrae House.

It is important to know if any students have allergies as students may be in contact with food products and a set morning tea is given to all students during their visit (see sections 16 and 17).



**URRBRAE HOUSE HISTORIC PRECINCT
SCHOOLS' PROGRAM –JUNIOR - YEARS 1 - 2
INFORMATION FOR TEACHERS 2025**

Students will have contact with glue made from cornflour and water during their card-making.

If any student is unable to eat the food provided by the program, please have them bring along a suitable alternative for their morning tea.

5. Health, Welfare and Safety

When visiting Urrbrae House visitors are entering a building constructed in 1891 as a family home. The original balustrades (railings) around the outside verandahs and the inside Main Hall stairs are much lower than those in more recent buildings. All visitors are asked to take care not to lean on or over the balustrades.

All Urrbrae House staff and volunteers involved in our Schools' Program are required to have a "Working with Children Check (WWCC)". We do not allow other members of the public into Urrbrae House while the program is in operation.

Our volunteers and staff must follow the University's *Safe Environments for Children and Vulnerable People Policy*. In addition, they must agree to actions outlined in the local area document *Child Safe Environment – Urrbrae House Code of Conduct – Working with Children and Young People*. For more information see <https://www.adelaide.edu.au/waite-historic/urrbrae-house-precinct/education/child-safe-environment>

One of the Urrbrae House staff on-site during the program is a trained first aider and there are two First Aid boxes in the house. In the event of an emergency evacuation of Urrbrae House, our staff and volunteers will lead all visitors to our emergency evacuation assembly point which is the large area of lawn to the west of the building.



6. Minimising the spread of infections (such as COVID-19)

To minimise risks to all

- We ask that hand sanitiser (supplied near the front door) be used on entry to the building by everyone.
- Our staff and volunteers do not to participate in the program if unwell.
- We ask that your students, staff and/or volunteers who are unwell do not attend the program.
- Our staff and volunteers follow the latest University of Adelaide and SA Health requirements and recommendations where possible.

7. Preparation at school before your visit

We find that students gain even more from their participation in our program if teachers have prepared their students in advance by at least discussing with the students who the Waites were and what life might have been like in the 1890s.

**URRBRAE HOUSE HISTORIC PRECINCT
SCHOOLS' PROGRAM –JUNIOR - YEARS 1 - 2
INFORMATION FOR TEACHERS 2025**

Please make your students aware that once they enter Urrbrae House the experience will be like “stepping back in time” or “being characters in a play.” Students will need to use their imaginations.

Students will be referred to by their newly acquired Victorian names (name badges are supplied and worn by the students). All conversations will be conducted as if we are in 1892. During the program our staff and volunteers remain in their 1890s characters. Discussions about computers, television and electronic game systems will be met with bewilderment.

8. Students' personal belongings

Please aim to keep carry bags to a minimum. While in the house, students' belongings (“luggage” in 1892) such as bags, drink bottles and school hats will be stored under tables in the Main Hall until the end of their visit.



BICYCLING AND BICYCLE OUTFITS.

9. How to get to Urrbrae House

If coming by car or bus enter the property from Fullarton Road at Urrbrae into Walter Young Avenue. Buses may park near the front of the house in the circular driveway so long as they do not block access to the front of the building. Cars should park in the signposted Urrbrae House carpark. Visiting groups are met at the front door of the house.

If coming by public transport, the nearest access by bus is via Bus route 170 to stop 23 on Waite Road. From there enter Gate 3 of the Waite Campus and walk west for a minute or two to the rear of Urrbrae House. Follow the brick path around the house to the front door.

Alternatively, you can take Bus route 171 to stop 12 on Fullarton Road and then walk up the long driveway (Walter Young Avenue). The walk can take 15 minutes or more depending on your pace.

As Adelaide Metro timetables may change please check public transport information nearer to the time of your visit on the Adelaide Metro website <https://www.adelaidemetro.com.au>

10. Adults accompanying students on their visit

We understand that parents/carers often assist with school excursions and expect that your class will have some supervising adults accompanying the students. We look forward to having these parents, carers and teachers enter into the spirit of our recreated historical experience.

**URRBRAE HOUSE HISTORIC PRECINCT
SCHOOLS' PROGRAM – JUNIOR - YEARS 1 - 2
INFORMATION FOR TEACHERS 2025**

However, because of the size of some of the rooms in Urrbrae House and the nature of the activities being undertaken it is not practical to have large numbers of adults accompanying students inside the house. We expect **at least 4 and no more than 8 adults** to be attending with one class.

Accompanying adults are asked to allow Urrbrae House staff and volunteers to direct the morning's activities. While we appreciate parents' enthusiasm to get involved, we ask that they do not take over activities from their children as this lessens the students' learning experience.

11. Pre-school children

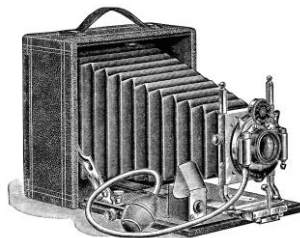
We understand that parents/carers may wish to bring the younger siblings of students on your excursion. However, because of Urrbrae House's heritage status, possible safety issues with stairs and the nature of the activities undertaken in our Schools' Program, it is **not possible** to have pre-school children including infants in the house while the program is underway.

12. Photography and mobile phones

While digital cameras, mobile phones and iPads did not exist in 1892, teachers, School Services Officers (SSOs) and authorised adults accompanying students to Urrbrae House are welcome to take photographs and video during their visit. However, we ask that this be done with sensitivity and discretely so as not to interrupt the flow of activities being undertaken.

Please also note it is the school's responsibility to ensure relevant permissions have been obtained and child safety requirements are followed if students are photographed/filmed during your visit.

Urrbrae House is a museum where we preserve our heritage for future generations. If taking photographs of antique items (especially those that might be damaged by bright light such as old newspapers, books and paintings) do not use flash photography.



We do not encourage students to bring along cameras/phones as having students stop their activities to take photographs can be very disruptive to their educational experience. If students do bring cameras/phones these should be carried by accompanying adults during the morning.

We understand that teachers and accompanying adults need to be contactable during their visit in case of emergencies. However, we ask that visitors do not use their mobile devices to text, make phone calls or check their emails/social media accounts during the visit unless there is an emergency.

URRBRAE HOUSE HISTORIC PRECINCT
SCHOOLS' PROGRAM – JUNIOR - YEARS 1 - 2
INFORMATION FOR TEACHERS 2025

13. Dividing your class into subgroups

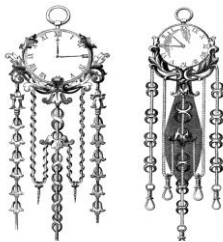
Prior to your arrival at Urrbrae House please divide your class into

- **Three** sub-groups of equal numbers if the class has 21 students or less.
- **Four** sub-groups of equal numbers if the class has 22 students or more.



B. AT URRBRAE HOUSE

14. Start and finish times



Our program begins promptly at **10.00am** and finishes at **12.30pm**. We highly recommend you arrive by **9.50am** so that students can use toilet facilities (located adjacent to the Urrbrae House gardens at the rear of the house) before the program starts. Having to take many individual students to the toilets during the program can be disruptive to their learning experience and interrupt the flow of activities during the morning.

Because of the set-up required in the house on the morning of your visit we are unable to let your class into the house before 10.00am without prior arrangement. If your class must leave before 12.30pm please advise the Urrbrae House Co-ordinator **in advance** of your visit as we will need to adjust our schedule of activities to accommodate this.

15. Arrival

Your group will be met at the front door of Urrbrae House by the “housekeeper” who will briefly outline to students the way the program will operate during the morning.

16. Structure of the Program

Each of the subgroups is assigned a group leader who is one of the historic characters from 1892 such as Mrs Waite. The group leader takes the children to various areas of the house during the morning where the children undertake hands-on activities and meet other characters such as the governess and household servants. All students are deemed to be visiting “young ladies and gentlemen” and undertake the same activities during the morning, but the sub-groups undertake these activities at different times.



**URRBRAE HOUSE HISTORIC PRECINCT
SCHOOLS' PROGRAM –JUNIOR - YEARS 1 - 2
INFORMATION FOR TEACHERS 2025**

Once inside the house, every student is given a Victorian-era name badge and an article of costume to wear over their existing clothing - lace collars for girls, vests for boys. Costumes are returned at the end of the program but students may keep their Victorian-era name badges as souvenirs of their visit to Urrbrae House.



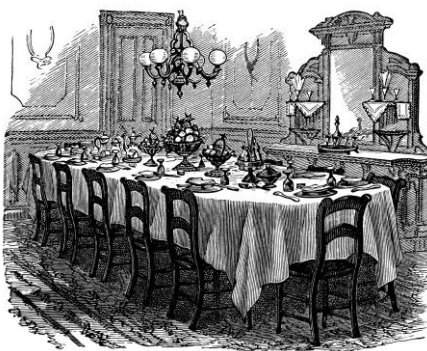
Activities undertaken by the young students include:

- a) guessing the use of historic domestic items such as a bed warmer, rug beater, washing dolly, charcoal iron, hair curling tongs, coffee grinder and cast-iron balance scales in the Kitchen and Laundry;
- b) seeing a demonstration of an 1890s hand-operated washing machine and washboard;
- c) collecting eggs [egg hunt] in the garden (weather permitting);
- d) making greeting cards using pressed flowers and paper cuttings with one of the ladies in the Drawing Room;
- e) learning how to use nib pens and ink in the Schoolroom with the governess;
- f) seeing inside the Main Hall, Library, Billiard Room, Ballroom and Miss Eva's Bedroom; and
- g) having morning tea in the Dining Room seated around the Waite family's 1876 oak table.

The sub-groups come together at the end of the morning to play a Victorian era parlour game known as "Signalman." This game is similar to Musical Chairs: students try to find a seat in the train carriage when the train whistle blows.

17. Morning Tea in the Dining Room

All students are served the same morning tea by our Maids (program staff and volunteers):



- a) Shortbread biscuits [*commercially produced*]
- b) Slices of fresh oranges
- c) Lemonade [*Bickfords lemon cordial and water*]. Water is available as an alternative to the lemonade.

As mentioned above, if any student is unable to eat the food provided by the program, please have them bring along a suitable alternative for their morning tea.

URRBRAE HOUSE HISTORIC PRECINCT
SCHOOLS' PROGRAM – JUNIOR - YEARS 1 - 2
INFORMATION FOR TEACHERS 2025

C. FURTHER INFORMATION

Please check out our website for additional information and resources.

<https://www.adelaide.edu.au/waite-historic/urrae-house-precinct/education>

If you have any queries please do not hesitate to contact:

Kathryn Pearson, Urrbrae House Co-ordinator

Phone 08 8313 7497 or email urraehouse@adelaide.edu.au

Lynette Zeitz, Manager and historian, Urrbrae House Historic Precinct

Phone 08 8313 7425 or email urraehouse@adelaide.edu.au

D. ACKNOWLEDGEMENT

Victorian-era images used in these notes may be found at

The Old Design Shop: Vintage Image Treasury <https://olddesignshop.com> (accessed 12 December 2024).

Thank you for taking the time to read through all of this information to prepare for a visit to Urrbrae House. You deserve a gold star.

